



# HOSHIZAKI

## CERTIFICATION



HACCP International



ISO9001

## DCM-120LS-HC

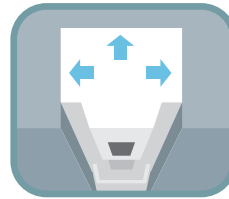
### ICE & WATER DISPENSER



## Key Features



**Eco- friendly  
Refrigerant**



### Perfect fit

There are no exhaust outlet on the left and right sides and the back, so it can be placed close to the wall.



### Hygienic design

This Lever type of ice dispenser prevents touching the lip of a glass.



### Easy for daily cleaning

Draining board can be removed



### Easy for maintenance

Notify when parts should be replaced

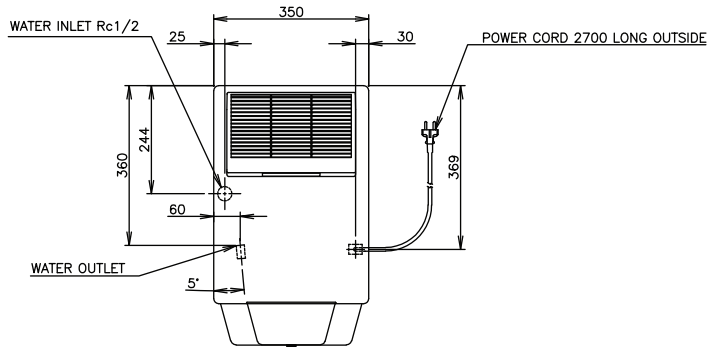
Hoshizaki DCM series are ice/water dispensers producing high-quality servings of cubelet ice and/or water. The three steps of quality ice production, protected ice storage, as well as quick service of ice are all combined in one device – with the help of only one button your refreshment is ready in seconds. With DCM DISPENSERS the user can select from these options:

- Cubelet ice only
- Cubelet ice and water
- Water only



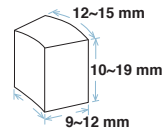
## Dimensions & Specifications

### TOP

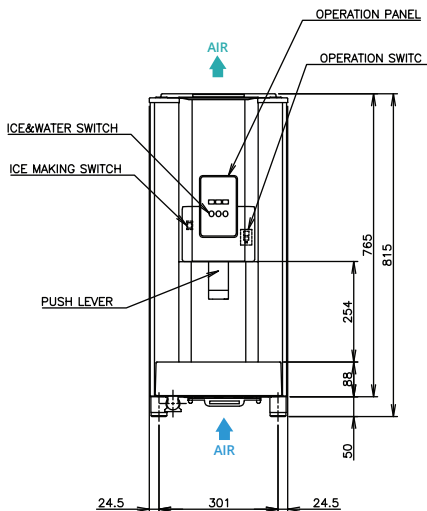


### ICE SHAPE

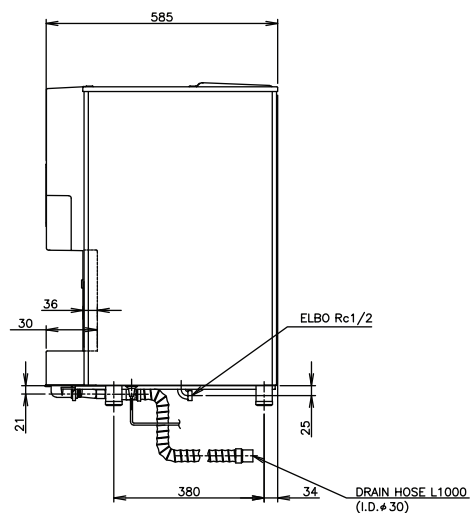
**Cubelet**  
Compressed Flake Ice



### FRONT



### RIGHT SIDE



MODEL		DCM-120LS-HC
ICE SHAPE		Cubelet (Compressed Flake Ice)
POWER SUPPLY		1 Phase 220-240/220-230V 50Hz Capacity: 0.69kVA (3.0A)
AMPERAGE		2.4A Starting: 9.7A
ELECTRIC CONSUMPTION		391W
HEAT REJECTION		(AT32°C / WT21°C) 760W
ICE PRODUCTION PER 24H	(AT10°C / WT10°C)	Approx. 120kg
	(AT21°C / WT15°C)	Approx. 110kg
	(AT32°C / WT21°C)	Approx. 90kg
ICE DISPENSING RATE (40G / CUP)	(AT10°C / WT10°C)	Approx. 225 cups/h
	(AT21°C / WT15°C)	Approx. 214 cups/h
	(AT32°C / WT21°C)	Approx. 193 cups/h
STORAGE CAPACITY		Approx. 4.0kg
WATER CONSUMPTION PER 24H	(AT32°C / WT21°C)	90 L
REFRIGERANT		R290
OUTSIDE DIMENSIONS		Carton: 350mm (W) x 585mm (D) x 815(~830)mm (H)
PACKAGE		Carton: 400mm (W) x 641mm (D) x 872mm (H)
WEIGHT		44kg (Gross: 48kg)
OPERATING CONDITIONS		Ambient Temp.: 5-40°C, Water Supply Temp.: 5-35°C,
		Water Supply Pressure: 0.05-0.78MPa
		Voltage Range: Rated Voltage ±6%



# HOSHIZAKI

**HOSHIZAKI MALAYSIA SDN. BHD.**

16, JALAN TP5A, Prestij 16,  
Taman Perindustrian Uep, 47620 Subang Jaya, Selangor  
TEL +603-8023 5823 <https://hoshizaki.com.my/>

